

# Flat Floor System

BY KLINDEX



# Flat Floor System from Klindex

## MAKE YOUR FLOOR *Super Flat* WITH KLINDEX

The powerful Klindex rigid head  
**Expander range**  
is the ideal grinding machine to achieve  
**perfect flat floor** with concrete, marble, granite,  
terrazzo or limestone.



### Rigid Head VS Floating Head

Klindex has designed and manufactured the Expander range of floor grinders to give the ultimate **FLAT FLOOR**.

The Expander range has a fixed planetary gear driven head that works to grind all flooring surfaces flat. The Expander 1000 with its one meter planetary six head design along with its 1.35 tonne weight delivers the ultimate flat floor.

Many machines available on the market are designed with a floating grinding head. The design allows the machine to follow the contours of the floor and can at times leave a 'wavy' appearance to the floor.

The combination of the floating head and lighter machine weight reduces the grinding ability of the machine to produce perfectly flat floors.

#### Klindex Machines



Flat Floor

Rough floor

**Rigid Head Machines - Making the floor FLAT**

#### Other Machines



Wavy floor

Rough floor

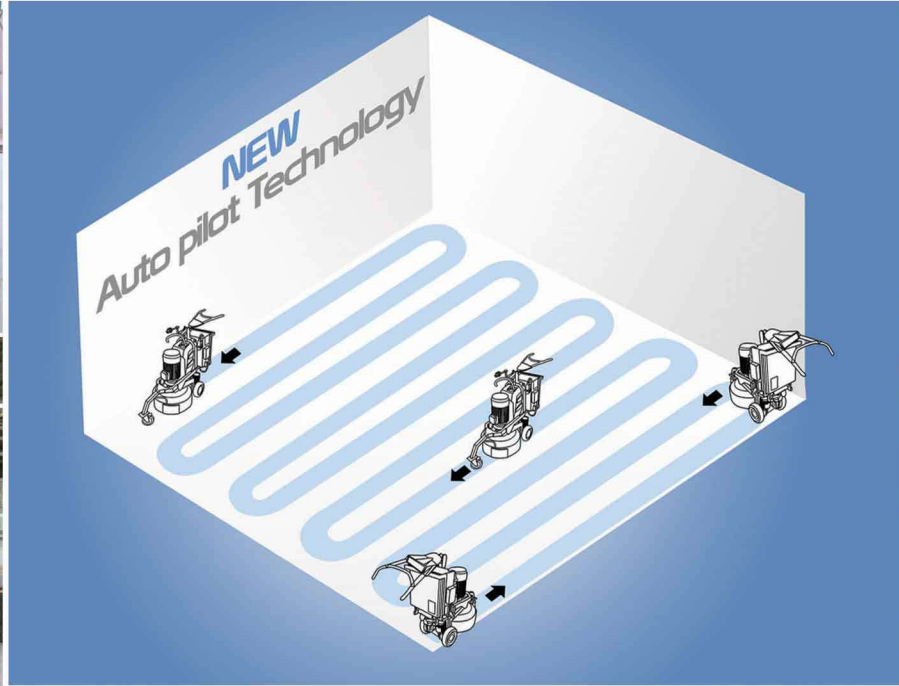
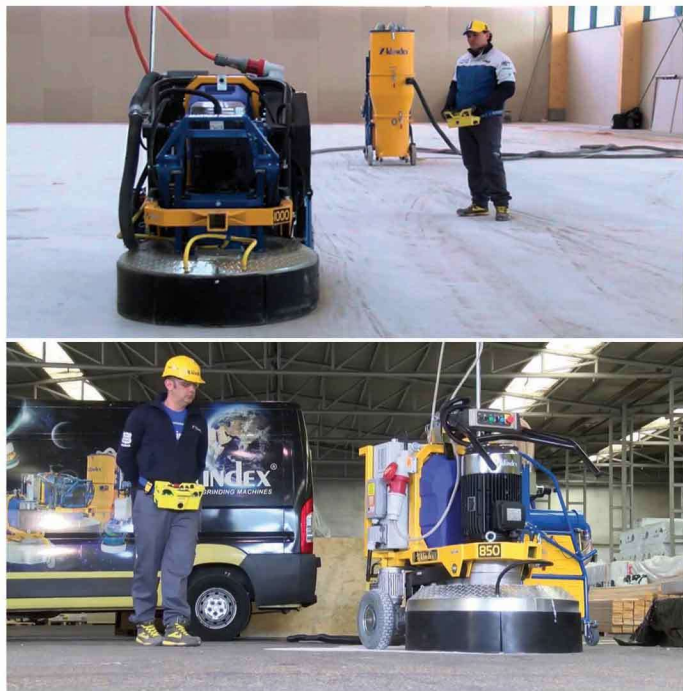
**Floating Head Machines - Making the floor wavy**

# Remote Control with Autopilot Function

**“LET THE MACHINE DOES IT ON ITS OWN”**

Klindex has developed a new and exclusive technology of remote automatic control for grinding and polishing machines. With this amazing system called “**Auto Pilot**”, Klindex machines can grind on their own the entire area moving forward, turning and coming back, crossing the grinding tracks leaving no untreated parts.

As the machine is regulated to make an equal number of passes, any uneven or high points in the floor are flattened at an equal rate to the rest of the floor.



## ADJUSTABLE WORKING PRESSURE



The Expander range allows the operator to manually adjust the working pressure of the planetary head. This feature improves the grinding production rate and also assures a flatter result to the floor as the grinding heads and working area is adjusted to be as level as possible.

## SIX HEAD GRINDING



With six heads, any high points are levelled more consistently than machinery with only three or four heads.

## SPRING SYSTEM



The spring attachments force the weight of the chassis onto the working area allowing the machine to have some slight movement during the grinding work, but always focusing the downward grinding pressure.